

Preliminary



Orchestrating a brighter world

NEC

Professional Installation Projectors

# PH Series

4K UHD

NP-PH2601QL | NP-PH3501QL



## Preliminary

# Powerful 3-chip 1.38" DLP installation projectors with the latest RB laser light source supports new, demanding projection

### Laser Light Module

- 30,000-plus hours of virtually maintenance-free operation
- High-brightness, lower power consumption enhances applications such as retail, digital signage and theme parks
- Ability to control brightness creating a stable image over longer time periods

### Integrated and Powerful

- Project uncompressed FHD video with integrated HDBaseT
- High performance video processing/scaling creates life-like images
- Integrated software applications such as DisplayNote®, Crestron Roomview, AMX Beacon and PJ Link allow for complete interactivity and control
- Tile Matrix enables 4Kx2K resolution

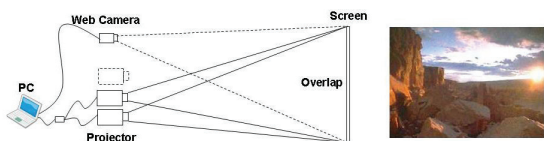
### Flexible

- Enjoy greater installation flexibility with powered optional bayonet style lenses providing quick and easy exchanges. Lens throw distances range from 4.6 to 245.1 ft
- Tilt-free installation capabilities make these projector ideal for almost any install environment, including portrait orientation
- +/- 0.5% vertical lens shift and +/- 0.17% horizontal lens shift capabilities make alignment easy



### Stacking correction

The industry's first built-in stacking correction capabilities (up to two projectors) allows the projectors to boost an image's brightness up to 70,000 lumens, which is ideal for larger-sized screens and environments with heavy ambient light. This feature also prevents the complete loss of an image, which can happen when using only one projector.



### Edge blending

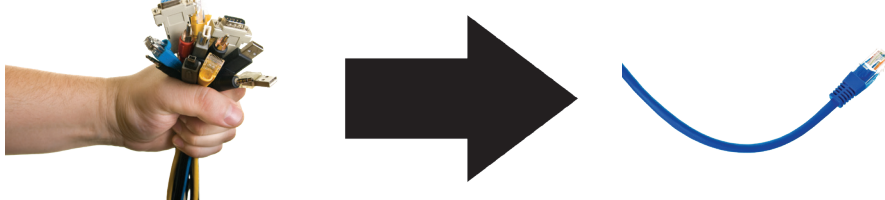
This function seamlessly blends multiple projected images to display a single high-resolution image.





## Built-In HDBaseT Support

Simplify your installations with HDBaseT. Optimized for video applications and supporting uncompressed full HD digital video, audio, ethernet, power and various control signals. With only a single cable (up to 100m) to run, infrastructure and labor costs are reduced, installations are significantly easier, and there is no cable clutter to manage. With uncompressed HD video support, images have never been more stunning. What's more, control signals are contained in the same cable.

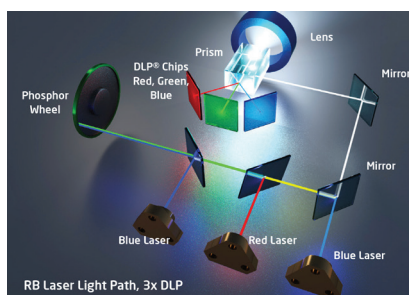


## GET CONNECTED WITH A WIDE SELECTION OF INPUTS

- **Dual computer inputs** ensure quick switching between presentations

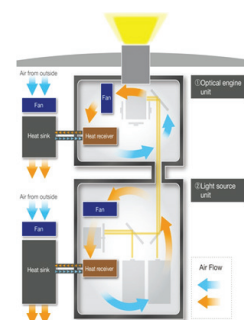
### Laser Light Module

- 20,000-plus hours of virtually maintenance-free operation
- High-brightness, lower power consumption enhances applications such as retail, digital signage and theme parks
- Ability to control brightness creating a stable image over longer time periods
- Images appear immediately after power on due to instantaneous start up of the laser



### Super Dust Protection

NEC's patented heat exchanger and the completely sealed optical engine offer continuously best performance in harsh Rental/Staging environment.



## ADVANCED SOFTWARE FEATURES

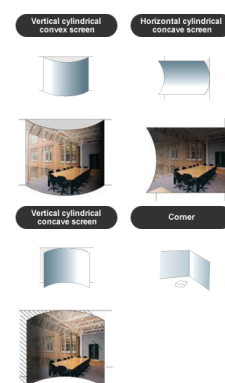
### Cornerstone

Enhanced keystone correction allows for horizontal, vertical and diagonal image correction for aligned images even when the projector is set up at an angle to the screen.



### Geometric Correction

Projecting an image isn't confined to a standard flat screen or wall with the NEC PH Series. Geometric correction allows these models to project an image on spheres, cylinders, corner angles and many more non-standard surfaces.



## UNIQUE FEATURES

**3D Reform™** allows you to square the image by adjusting horizontally, vertically or diagonally when the projector cannot be placed parallel or perpendicular to the screen

**Advanced AccuBlend™** ensures detailed images when non-native resolution sources are connected to the projector

**AutoSense™** automatically syncs with any computer signal and features one-touch image optimization

**64-step image magnification** with location control

**Discreet source keys** for source selection

**Remote diagnostics** enable the user to monitor and make adjustments to the projector remotely

**Built-in HTTP page** for control and monitoring over a LAN network. Email notification of error messages or lamp end-of-life can be sent to remote locations.

## WARRANTY

Registered owners receive a five (5) years or 20,000 hours (whichever comes first) parts and labor warranty, including the first year of InstaCare. InstaCare provides the original owner one year of either limited 3 business day repair/return or next business day exchange.

## IN THE BOX

Remote control, batteries, power cord, user's manual on CD-ROM, quick start guide, Lens Hole Cap, warranty Sheet, Security Sticker, Service Door Key

## ACCESSORIES

RMT-PJ35	Replacement remote control
NP01PW1	Power cable
RGBCL-PJPX	RGB cable
Optional Lenses	NC-50LS12Z, NC-50LS14Z, NC-50LS16Z, NC-50LS18Z, NC=50LS20Z
SB-01HC	HD/SS-SDI input card
SB-04HC	3G/HD/SD-SDI input Card
XPAND	X105-RF-1 3D Glasses
XPAND	AD025-RF-X1 RF Emitter

## ORDERING MODEL NUMBERS

NP-PH2601QL  
NP-PH3501QL



			PH2601QL	PH3501QL
Display Technology			1.38" DC4K DMD chip	
Light Output (lumens)			30,000 Center Lumens, 26,000 ANSI	40,000 Center lumens, 35,000 ANSI
Resolution	Native	4K 4096 x 2160		
	Maximum	4K 4096 x 2160		
Contrast Ratio (up to)			30,000:1 with Dynamic Contrast	
Laser Life (up to)			20,000 hours	
Screen Size (diagonal)			50 to 500 in. / 1.27 to 12.7m	
Throw Ratio	L2K-10F1	0.9		
	L4K-11ZM	1.10 - 1.70		
	L4K-15ZM	1.50 - 2.10		
	L4K-20ZM	2.00 - 3.40		
	L2K-30ZM	2.70 - 3.90		
	L2K-43ZM1	3.70 - 5.30		
L2K-55ZM1			4.80 - 7.40	
Projection Distance			2.5 to 68.5 ft. / 0.74 to 20.9m	
Projection Angle			10.3 to 10.8° tele / 13.7 to 14.5° wide	
Lens	Zoom		Powered	
	Zoom Ratio	L2K-10F1	Fixed	
		L4K-11ZM	1.5:1	
		L4K-15ZM	1.4:1	
		L4K-20ZM	1.7:1	
		L2K-30ZM	1.4:1	
		L2K-43ZM1	1.4:1	
	L2K-55ZM1		1.5:1	
	Focus		Powered	
	L2K-10F1		Power zoom / Power focus, TBD	
	L4K-11ZM		Power zoom / Power focus, TBD	
	L4K-15ZM		Power zoom / Power focus, TBD	
	L4K-20ZM		Power zoom / Power focus, TBD	
	L2K-30ZM		Power zoom / Power focus, TBD	
	L2K-43ZM1		Power zoom / Power focus, TBD	
	L2K-55ZM1		Power zoom / Power focus, TBD	
Shift	L2K-10F1	Powered -0.19/+0.27 Vertical, +/-0.08 Horizontal		
		L2K-30ZM		
		L2K-43ZM1		
	L4K-11ZM	Powered +/-0.17 Vertical, +/-0.50 Horizontal		
		L4K-15ZM		
		L4K-20ZM		
L2K-55ZM1		Powered -0.19/+0.31 Vertical, +/-0.10 Horizontal		
Shutter		Laser Shutter		
Keystone Correction			+/- 40° horizontal, +/- 40° vertical	
Synchronization Range	Horizontal	Analog: 15-100kHz, Digital: 15-153kHz		
	Vertical	Analog: 48-120Hz, Digital: 24-120Hz		
	Refresh Rate for 4K Signal	23.98, 34, 25, 29.97, 30, 50, 59.94, 60Hz		
Supported Video Standards			NTSC, NTSC4.43, PAL, PAL-60, PAL-M, PAL-N, SECAM	
SD/HD Video Signal Compatibility			4K, 1080p, 1080i, 720p, 576p, 576i, 480p, 480i	
PC Signal Compatibility			VGA, SVGA, XGA, SXGA, SXGA+, UXGA, WUXGA	
Macintosh Compatibility			Yes	
Input Terminals	RGB1 (digital)		HDMI (V2.0) w/HDCP (V1.4/2.2)	
	RGB2 (digital)		HDMI (V2.0) w/HDCP (V1.4/2.2)	
	RGB3 (digital)		DisplayPort w/HDCP (V1.4)	
	RGB4 (digital)		DisplayPort w/HDCP (V1.4)	
	RGB5 (digital)		HDBaseT w/HDCP (V1.4/2.2)	
	RGB6 (digital)		Quad 3G-SDI	
Option Slot		OPS		
Output Terminals	3D Sync Line		15 pin	
External Control			RS-232, IR, HDBaseT, DDC/CI, RJ-45, USB (USB 2.0), Stereo Mini	
Sync Compatibility			Separate Sync / Composite Sync / Sync on G	
Power Requirements			220 - 240V AC, 50/60Hz Single Phase	
Input Current			20A (TBD)	TBD
Power Consumption			TBD	
(ECO off/ECO Mode/Standby/Standby-Power Saving)			TBD	TBD
Installation Orientation			Floor/Front, Floor/Rear, Ceiling/Front, Ceiling/Rear	
Dimensions (WxDxH)			27.4 x 46.5 x 17.9 in. / 697 x 1180 x 455mm	
Net Weight			372.6 lbs. / 169 kg	
Fan Noise			55dB	
Regulations				
U.S.			UL60950-1 (2nd) / FCC Part15 Class A (Marking: UL)	
Canada			CSA60950-1 / ICES-003 Class A (Marking: CAN ICES-38(A)/NMB-38(A))	
Latin America			EN60950-1/EN55022 Class A, EN55032 Class A, EN55024, EN61000-3-2/3-3/3-11/3-12 (Marking CE)	
Laser Safety	USA	IEC60825-1 Edition3 2014 : Class1, IEC62471 2006 : RG3, FDA(21 CFR 1040.10 and 1040.11)		
	Others	IEC60825-1 Edition3 2014 : Class1, IEC62471 2006 : RG3		
Operating Temperature			41° - 104°F / 5° - 40°C	
Humidity			20-80% non-condensing	
Storage			14° - 122°F / -10° - 50°C	

\* Lens does not ship with the projector.  
Additional accessories are available, including screens, carts, mount accessories and replacement cables.  
Visit [www.necdisplay.com](http://www.necdisplay.com) for details.

3D Reform, Advanced AccuBlend, AutoSense and ECO Mode are trademarks of NEC Display Solutions. HDMI, the HDMI Logo and High-Definition Multimedia Interface are trademarks or registered trademarks of HDMI Licensing LLC. All other brand or product names are trademarks or registered trademarks of their respective holders. Product specifications subject to change.